



CENTER COURT

THE RIGHT ADDRESS TO GROW YOUR BUSINESS

Premium Offices and Shops in Solapur's Prime Locality



SOLAPUR'S FIRST, SOLAPUR'S FINEST!

Standing at the intersection of contemporary design and superior craftsmanship, **Center Court** is truly a gamechanger in the city's commercial realty landscape.

Class meets convenience at **Center Court**, which is a one-of-its-kind business hub that offers an inspiring environment to drive growth and progress.

ADVANTAGE "CENTERCOURT"

- Road-touch prime location commercial property in the heart of Solapur
- Elegantly designed business plaza spread over G+6 floors
- New-age Offices and Shops suited for various enterprises
- Excellent visibility and frontage
- Ample parking for shoppers / visitors



CRAFTED FOR 'EASE OF DOING BUSINESS'

Pioneering Landmark

Be a part of history with Solapur's one-of-its-kind commercial building, setting the benchmark for future developments in the area.

Cherry-picked Location

Center Court is an address that shoppers and customers find supremely convenient. Quick and easy access to the railway station, airport, national highways, marketplaces, banking services, and healthcare facilities ensures your business enjoys effortless accessibility and unparalleled connectivity.

Design Innovation

Center Court caters to all types of enterprises, big and small, providing office environments tailored to catalyze your business endeavours.

Splendid, Inside Out

The classy exteriors and modern amenities are a perfect match for retail/office spaces that stand out with their branded fitments and premium quality accessories.

Maximum Flow, More Footfalls

Center Court's spot-on location translates into a high transient volume and heavy footfall, which facilitates rapid business growth.



Artist Impression

ONE FOR EVERYONE

Solapur is on the fast track of growth, marked by an increasing demand for multiple services and conveniences.

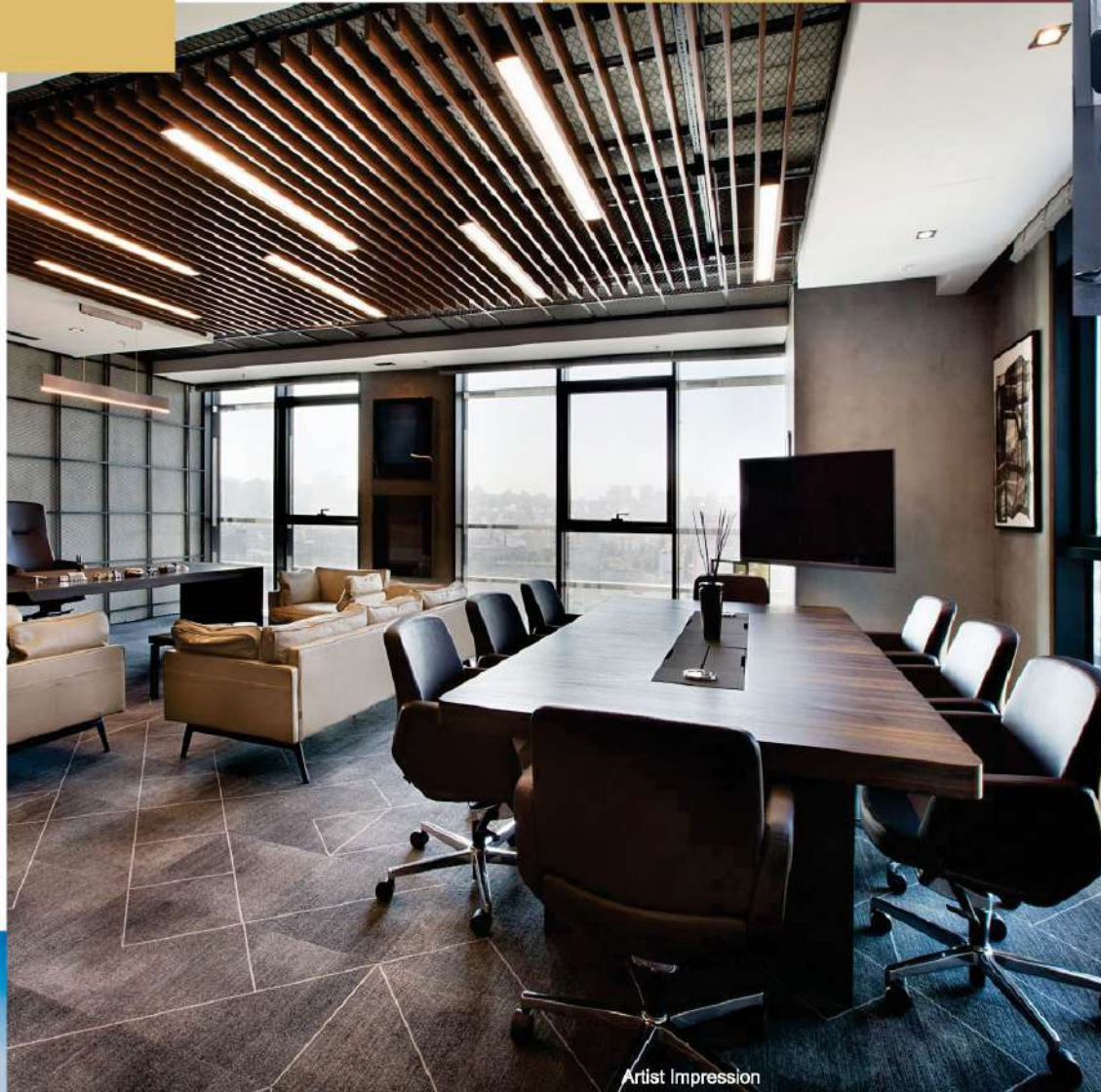
Center Court is designed to accommodate a variety of businesses that include :

- Corporate Offices
- Startup Entities
- IT Companies
- Offices for Architects, Interior Designers, CAs, Pathology Labs, Management Consultants, etc.
- Clinics for Dentists and Physicians
- Shops for various Traders, Courier Companies, Quick Service Restaurants (QSR), Ice Cream Parlors, etc.

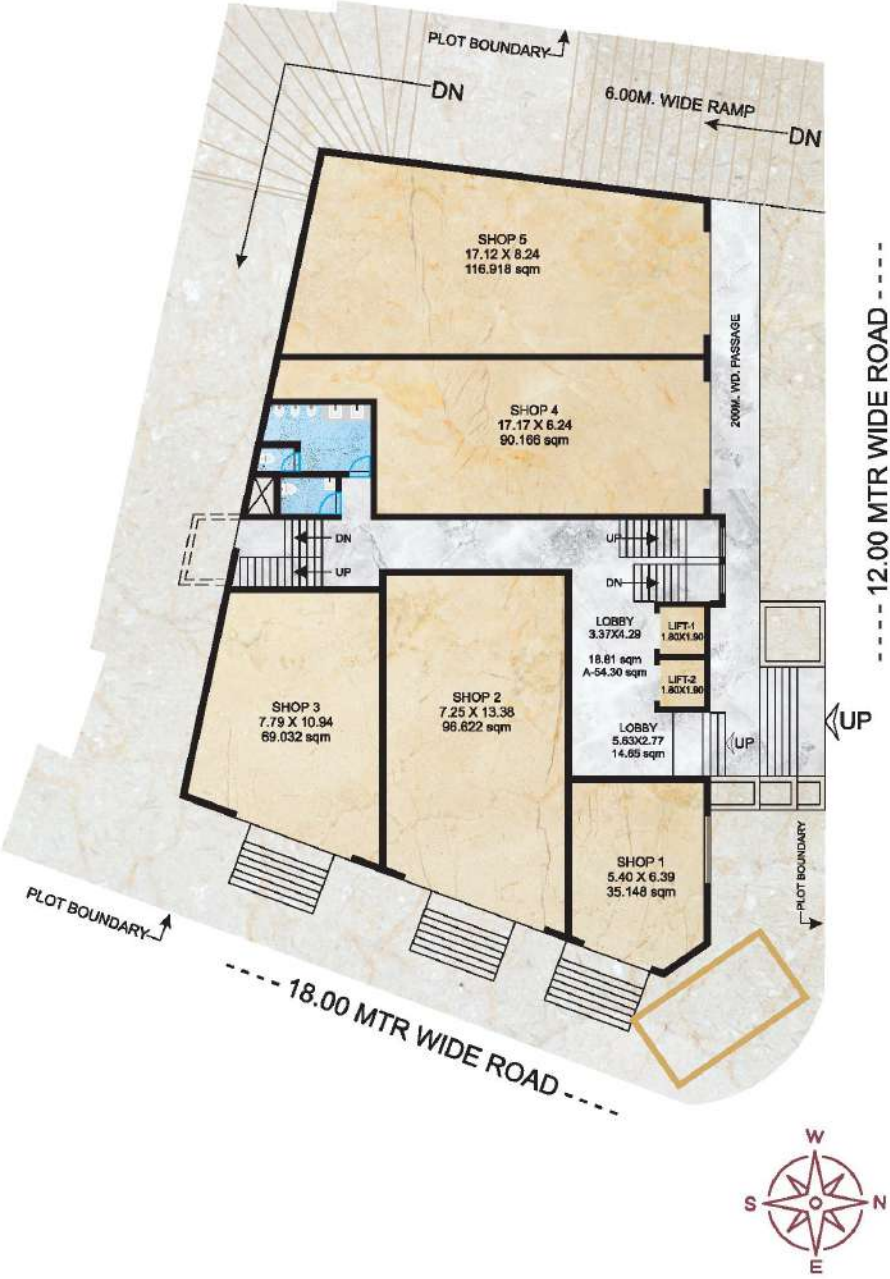


KEY PROJECT HIGHLIGHTS

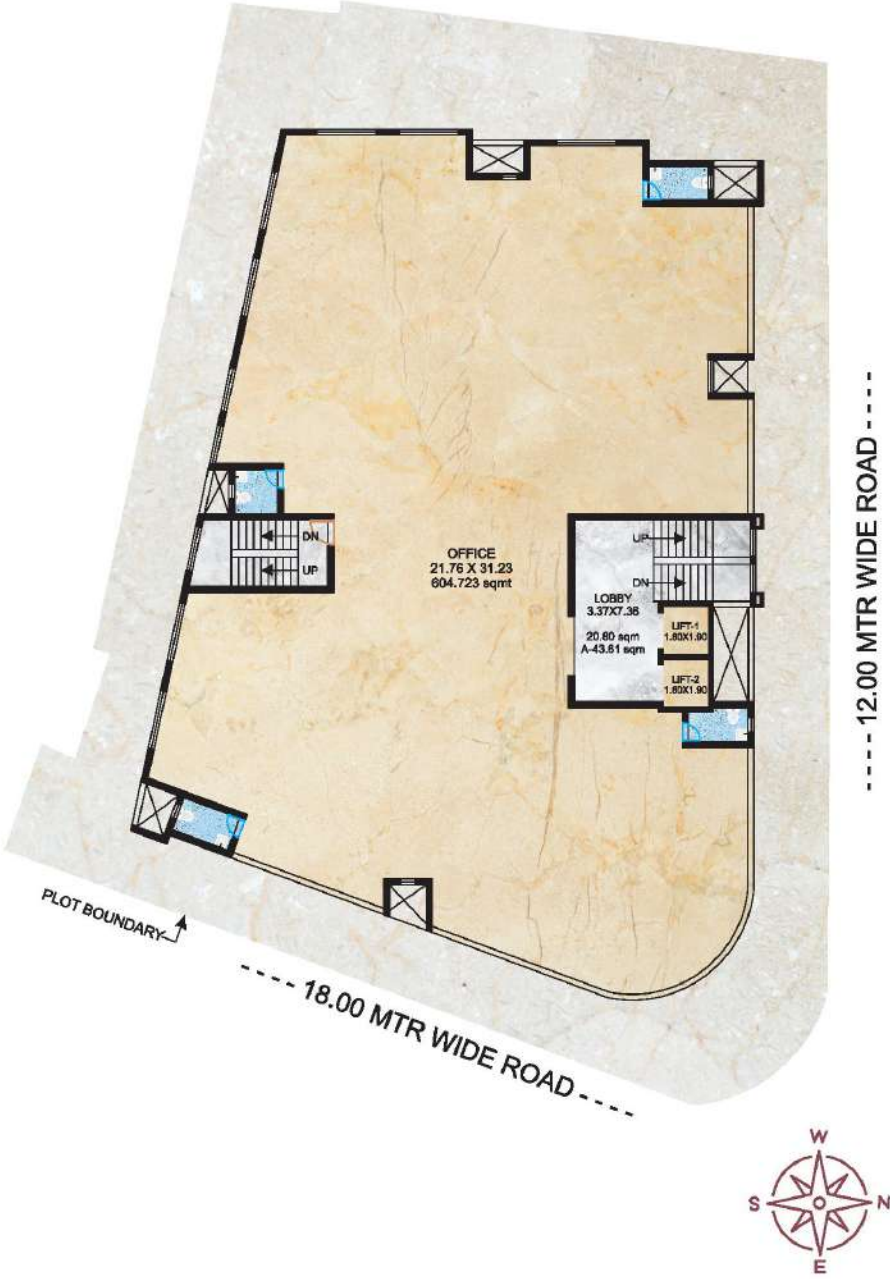
- Modern and contemporary Elevation
- Energy efficient glass facade
- Earthquake Resistant RCC framed structure
- Intelligently planned column grids for maximum usable space
- 3 levels of parking
- Dedicated 2-wheeler parking
- Exclusive designer lobby
- Well designed passages
- 2 high speed lifts each having carrying capacity of 8 passengers
- 3 phase MSEB meter with MCB
- Vitrified tiles in all units
- Paving blocks in external pathway



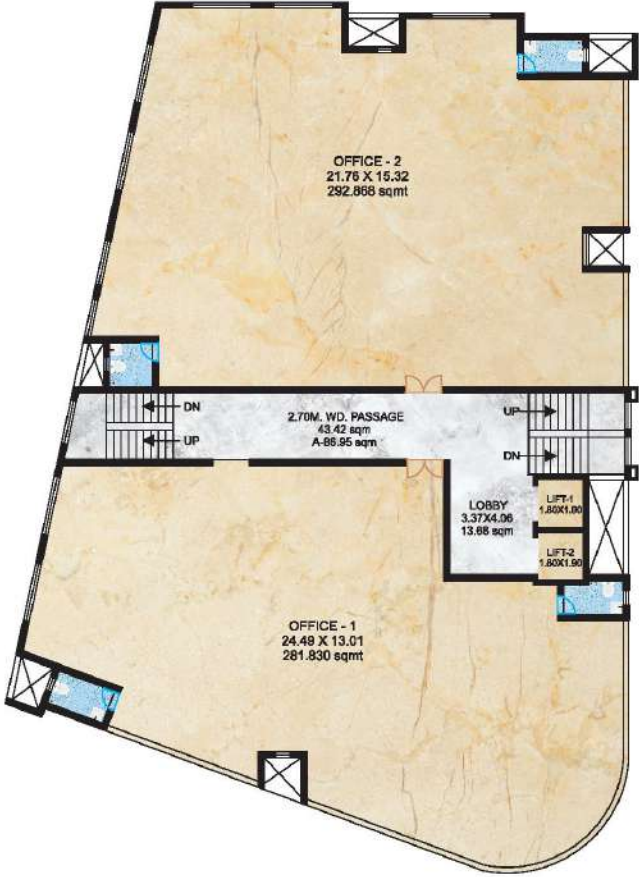
GROUND FLOOR PLAN - SHOPS



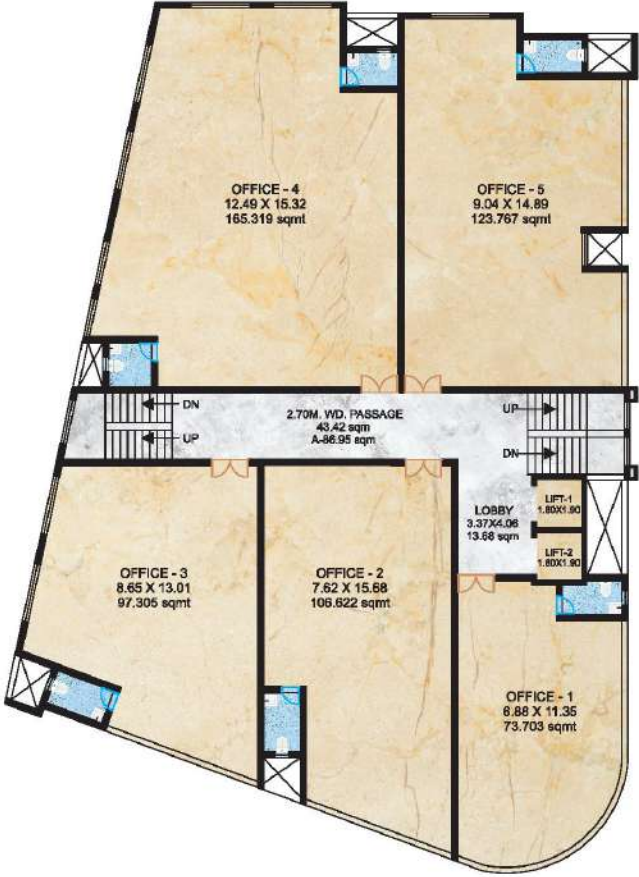
FIRST FLOOR PLAN - OFFICE



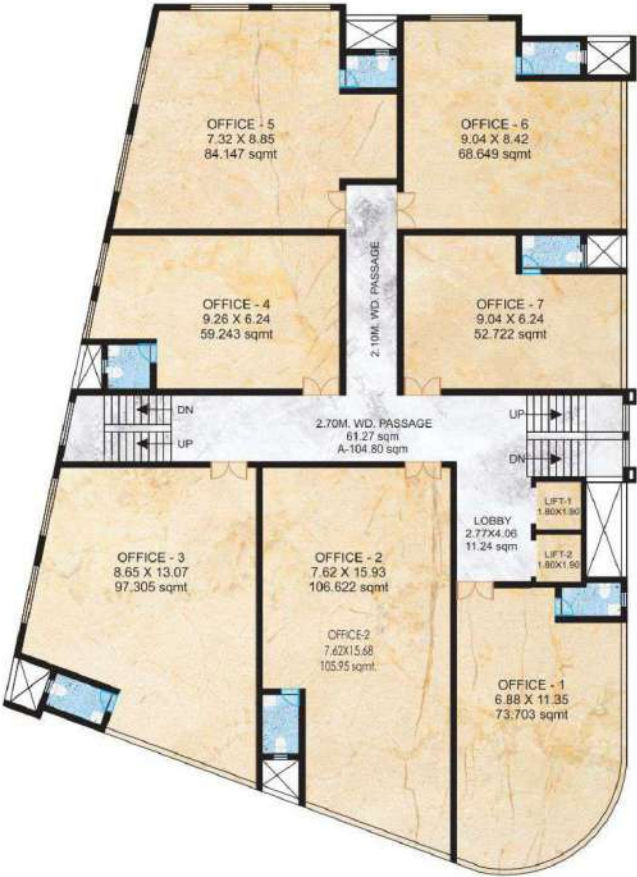
SECOND FLOOR PLAN - OFFICE



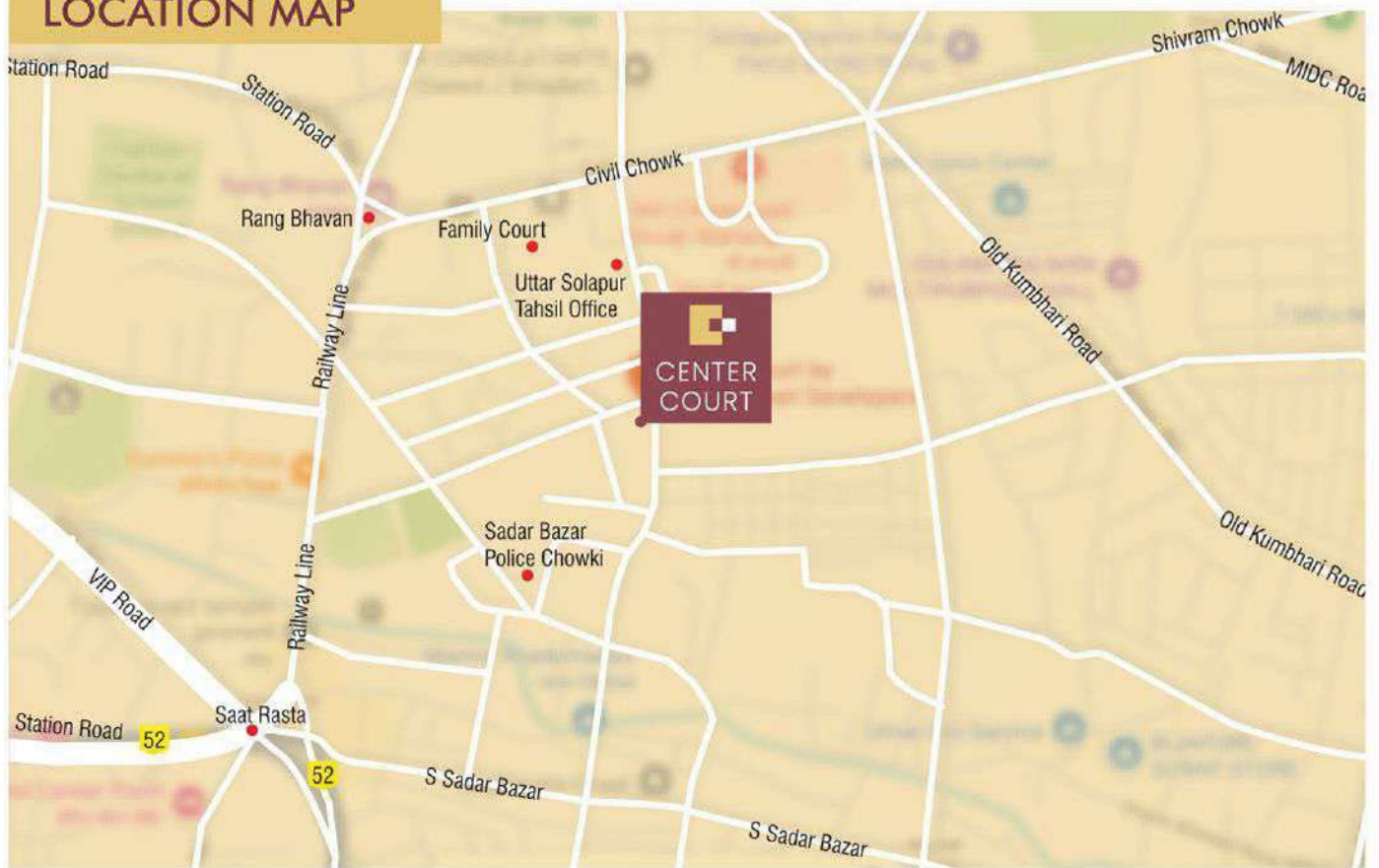
THIRD FLOOR PLAN - OFFICE



FOURTH TO SIXTH FLOOR PLAN - OFFICE



LOCATION MAP



SITE ADDRESS :

CTS No. 7114, Centre Court,
2/1/B, S Sadar Bazar,
Jawaharlal Housing Society,
Keshav Nagar, Solapur,
Maharashtra 413003



MAHESHWARI
GROUP

Pune : 206, Citi Centre, Opp Ayurvedic Rasshala, Karve Road, Pune 411004

Solapur : 201, MGM House, Sona Hira Chowk, Solapur 413002

☎ **0217-2723635, 9075777733, 9075999933**

✉ info@maheshwariconstro.com | www.maheshwariconstro.com

MAHARERA Registration No. P52100021467 | maharera.mahaonline.gov.in

